



**SCHOOL DISTRICT 8**  
**SAINT JOHN, NEW BRUNSWICK**

***PROPOSED  
REORGANIZATION***  
  
***of the***  
  
**NORTHERN  
PENINSULA  
SCHOOLS**

**SEPTEMBER 2008**

## **THE PROPOSAL**

The proposal includes closing Hazen White-St. Francis School and Lorne School at the end of June 2009. Effective September 2009, middle school grades currently at Hazen White-St. Francis, Lorne, and Princess Elizabeth schools would be consolidated at Millidgeville North School, thus making Millidgeville North School a middle school. Also, effective September 2009, the elementary students currently at Hazen White-St. Francis School would move to Princess Elizabeth School, thus making Princess Elizabeth School an elementary school. Early French Immersion students currently attending Millidgeville North School, will continue their program of study at Millidgeville North until entering high school.

## **Historical Profile**

### *Lorne Middle School*



**Lorne Middle School** has 55,150 square feet. It was originally constructed in 1958. The classroom wing was rebuilt in 1984 as a result of a fire. There is a City of Saint John community center attached to the building – the community center and school share a gymnasium. The school has grades 6-8 and draws its students from M. Gerald Teed Elementary and Centennial Elementary schools. Students leaving Lorne School after grade 8 typically go to high school at St. Malachy's Memorial High or Saint John High School.

**Hazen White-St. Francis School (HWSF)** was constructed in 1961 and has 52,520 square feet. The Hazen White portion of the school is owned by the Province of New Brunswick and the St. Francis section is owned by the Roman Catholic Diocese. The school has grades K-8. Historically students wishing to take French Immersion would enroll at Millidgeville North School for Early French Immersion or Princess Elizabeth School for Late French Immersion. Students leaving HWSF after grade 8 typically go to high school at St. Malachy's Memorial High or Saint John High School.

### *Hazen White- St. Francis School*



*Princess Elizabeth School*



**Princess Elizabeth School** was constructed in 1949 and has 62,213 square feet. The school has grades K-8. Historically, Princess Elizabeth has received students wishing to take Late French Immersion from HWSF, M.G. Teed, St. John the Baptist-King Edward, Centennial and Prince Charles schools. Kindergarten students wishing to take Early French Immersion have historically enrolled at Millidgeville North School. Students leaving Princess Elizabeth School after grade 8 typically go to high school at St. Malachy's Memorial High or Saint John High School.

Princess Elizabeth School is located less than 2.5 kilometers from Hazen White-St. Francis School.

*Millidgeville North School*

**Millidgeville North School (MNS)** was constructed as a high school in 1967 and covers 249,000 square feet. The school currently has grades 2-8. Historically, MNS has received students wishing to take Early French Immersion from HWSF, M.G. Teed, St. John the Baptist-King Edward, Centennial, Princess Elizabeth and Prince Charles schools. Students leaving Millidgeville North School after grade 8 typically go to high school at St. Malachy's Memorial High or Saint John High School.

Millidgeville North School is located 4.5 kilometers from Hazen White-St. Francis School, 4.0 kilometers from Lorne School and 4.3 kilometers from Princess Elizabeth School.

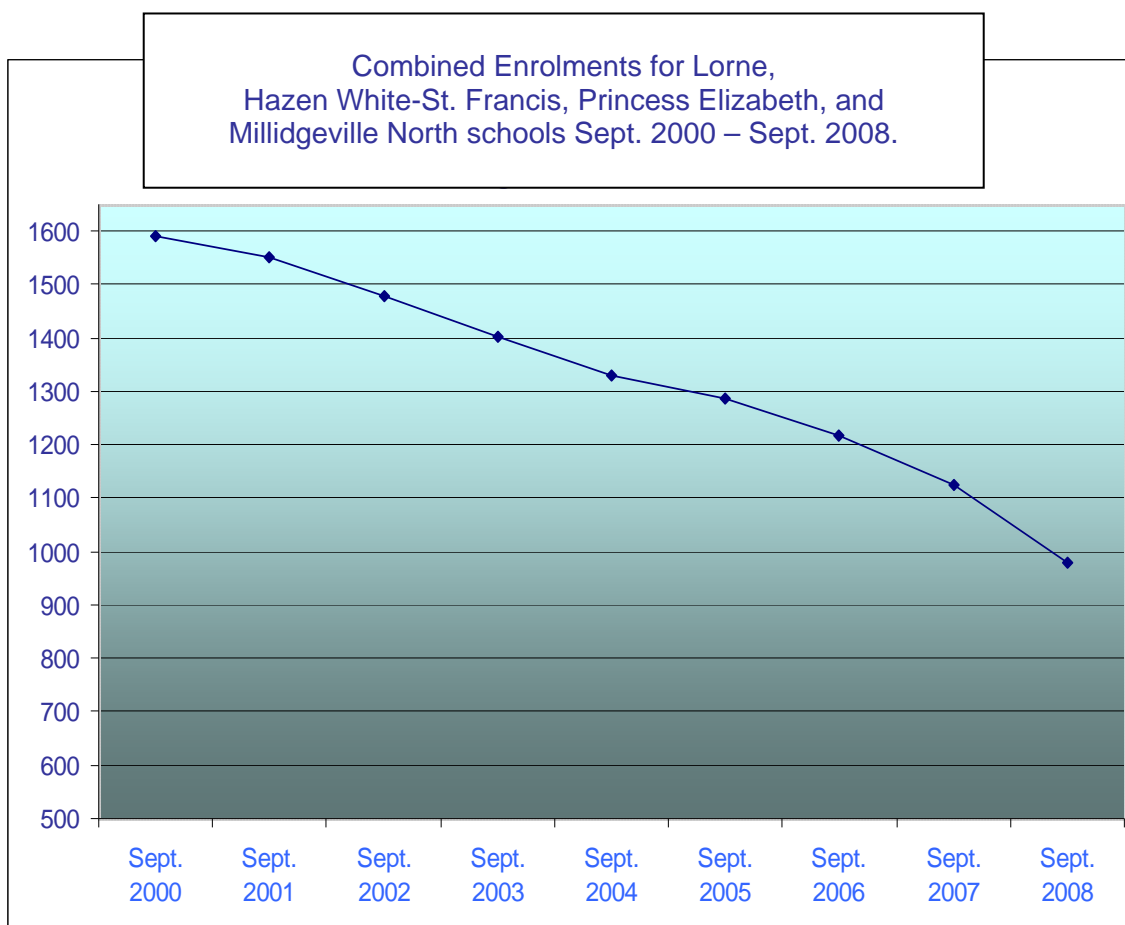


## Student Enrolment Northern Peninsula Schools

Student Population Trends for Millidgeville North, Lorne Middle, Hazen White-St. Francis and Princess Elizabeth schools.

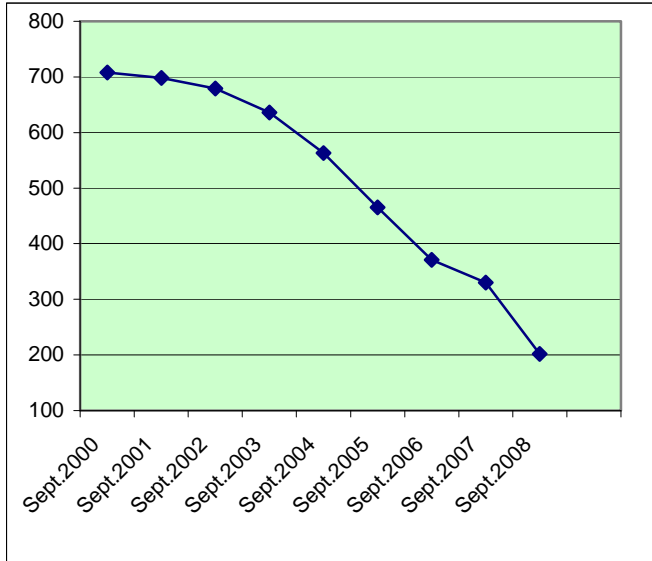
School	Sept. 2000	Sept. 2001	Sept. 2002	Sept. 2003	Sept. 2004	Sept. 2005	Sept. 2006	Sept. 2007	Sept. 2008
Millidgeville North	708	698	679	636	563	465	371	330	202
Lorne Middle	214	210	220	237	258	259	253	242	189
Hazen White-St. Francis	211	215	190	179	174	151	151	130	137
Princess Elizabeth	458	427	389	351	334	*411	442	422	452
<b>Total</b>	1591	1550	1478	1403	1329	1286	1217	1124	980

\* Students from Holy Trinity added in September 2005

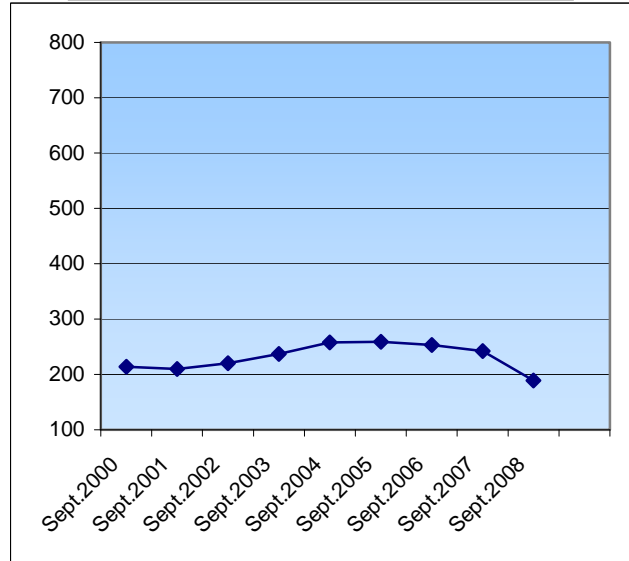


**Individual School Populations – Sept. 2000 – Sept. 2008**

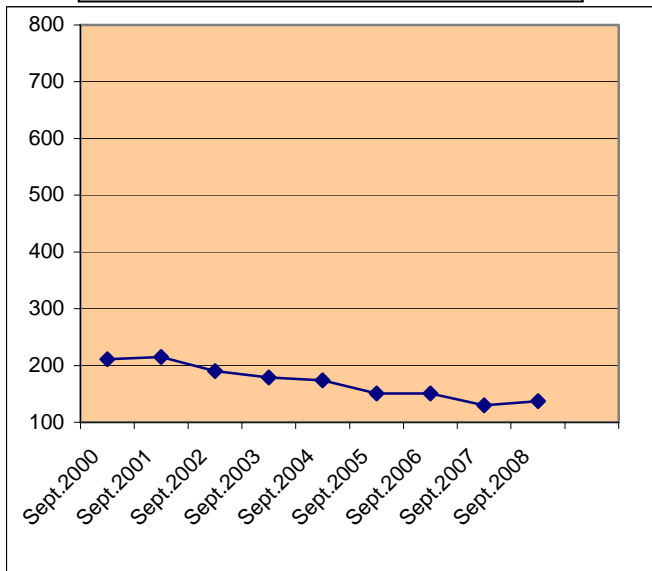
Millidgeville North School



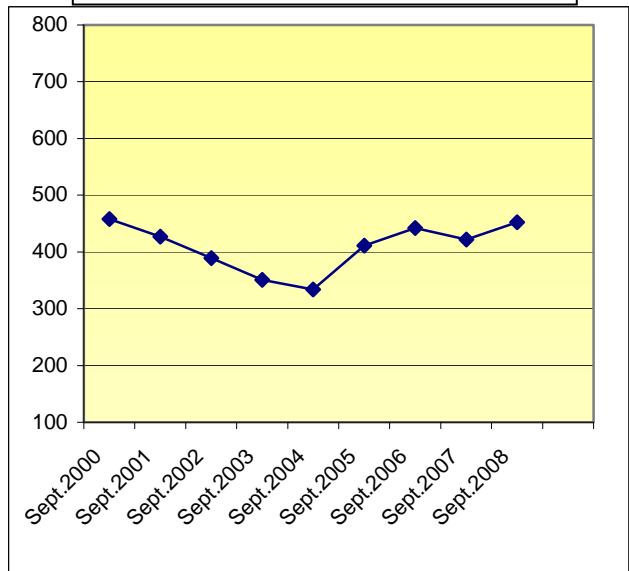
Lorne Middle School



Hazen White-St. Francis School



Princess Elizabeth School



\* Students from Holy Trinity added in September 2005

**Current Organization as of September 2008**

Student enrolment and class sizes before consolidation are reflected in the following tables. Enrolments are as of September 3, 2008.

Hazen White - St. Francis School			
GRADES	CLASSROOM ENROLMENTS		TOTALS
K	10	10	20
1	22		22
2	13		13
3	<b>19</b>		19
4	<b>5</b>	<b>8</b>	13
5		<b>13</b>	13
6	16		16
7	<b>12</b>		12
8	<b>9</b>		9
			137

Lorne Middle School				
GRADES	CLASSROOM ENROLMENTS		TOTALS	
K			0	
1			0	
2			0	
3			0	
4			0	
5			0	
6	24	23	47	
7	30	28	28	86
8	11	17	28	56
			189	

Millidgeville North School			
GRADES	CLASSROOM ENROLMENTS		TOTALS
K	Not offered		0
1FI	Not offered		0
2FI	16	16	32
3FI	23		23
4FI	26		26
5FI	15	15	30
6FI	26		26
7FI	20	<b>9</b>	29
8FI	26	<b>10</b>	36
			202

Princess Elizabeth School				
GRADES	CLASSROOM ENROLMENTS		TOTALS	
K	20	20	40	
1	15	16	16	47
2	13	16	29	
3	28	<b>4</b>	32	
4	28	<b>13</b>	41	
5	23	23	46	
6	19	18	37	
7	26	<b>13</b>	39	
8	24	<b>8</b>	32	
6FI	24	21	45	
7FI	21	<b>10</b>	31	
8FI	23	<b>10</b>	33	
			452	

**Note:** Combined classes are noted in bold type and shaded in the tables.



Total 980

Reorganization using September 2008 Enrolments

<b>SCHOOL:</b> Millidgeville North School	<b>TO INCLUDE:</b> Millidgeville North (Early Immersion) and Hazen White-St. Francis School; Lorne Middle School; Princess Elizabeth School (middle school students)	
<b>ENGLISH PROGRAM</b>		
<b>GRADES</b>	<b>CLASSROOM ENROLMENTS</b>	<b>TOTALS</b>
K		0
1		0
2		0
3		0
4		0
5		0
6	25 25 25 25	100
7	28 28 27 27 27	137
8	24 24 24 25	97
Regular Enrolment		334
<b>FRENCH IMMERSION PROGRAM</b>		
<b>GRADES</b>	<b>EARLY IMMERSION</b>	<b>TOTALS</b>
1		0
2	16 16	32
3	23	23
4	26	26
5	15 15	30
6	26	24 21
7	20 9	21 10
8	26 10	23 10
Immersion Enrolment		311
Total Enrolment		645
<b>STAFFING</b>		
Student Enrolment	645	
Administration	2.3	
Elementary Classes	6.0	
Elementary Specialists	0.6	
Middle School Classes	22.0	
Middle School Specialists	4.4	
Middle School Guidance	1.0	
Adjustment	0.6	
<b>TOTAL</b>	<b>36.9</b>	
<b>COMMENTS</b>		
		The adjustment allocation of 0.6 is to provide English to French Immersion students in Grades 3, 4, and 5.
		<b>Note:</b> Combined classes are noted in bold type and shaded in the tables.

<b>SCHOOL:</b> Princess Elizabeth	<b>TO INCLUDE:</b> Princess Elizabeth School and Hazen White-St. Francis School (elementary students)	
<b>ENGLISH PROGRAM</b>		
<b>GRADES</b>	<b>CLASSROOM ENROLMENTS</b>	<b>TOTALS</b>
K	20 20 20	60
1	17 17 17 18	69
2	21 21	42
3	25 26	51
4	27 27	54
5	20 20 19	59
6		0
7		0
8		0
Regular Enrolment		335
<b>STAFFING</b>		
Student Enrolment	335	
Administration	1.2	
Elementary Classes	16.0	
Elementary Specialists	1.6	
Middle School Classes		
Middle School Specialists		
Middle School Guidance		
<b>TOTAL</b>	<b>18.8</b>	

**COMMENTS:** Does not include resource and methods teachers, mentors, coaches or community schools teachers.

Staffing Comparison prior to and after reorganization using September 2008 enrolment figures

Staffing Comparison										
	Administration	Elementary Classes	Elementary Specialists		Middle School Classes	Middle School Specialists	Middle School Guidance		Adjustment	TOTAL
<b>CURRENT</b>										
Hazen White-St. Francis	1.00	6.00	0.60		2.00	0.40	0.10			10.10
Princess Elizabeth	1.60	12.00	1.20		10.00	1.80	0.40		0.15	27.15
Lorne Middle	1.00				8.00	1.60	0.40			11.00
Millidgeville North	1.00	6.00	1.40		4.00	0.80	0.20		0.55	13.95
<b>TOTAL</b>	<b>4.60</b>	<b>24.00</b>	<b>3.20</b>		<b>24.00</b>	<b>4.60</b>	<b>1.10</b>		<b>0.70</b>	<b>62.20</b>
<b>PROPOSED</b>										
Princess Elizabeth	1.20	16.00	1.60							18.80
Millidgeville North	2.30	6.00	0.60		22.00	4.40	1.00		0.60	36.90
<b>TOTAL</b>	<b>3.50</b>	<b>22.00</b>	<b>2.20</b>		<b>22.00</b>	<b>4.40</b>	<b>1.00</b>		<b>0.60</b>	<b>55.70</b>
<p>The allocation for resource and methods teachers, mentors, coaches, and community schools teachers is <u>not</u> included in this comparison. Adjustments to some staff allocations are to accommodate travel time for teachers who serve more than one school.</p>										

**Budgetary Considerations**

If schools were reorganized today, a savings of \$928,871 would be realized.

**CURRENT**

	HWSF		LORNE		PES		MNS		TOTAL	
	FTE	COST	FTE	COST	FTE	COST	FTE	COST	FTE	COST
<b>Educational</b>	10.10	\$606,000	11.00	\$660,000	27.15	\$1,629,000	13.95	\$ 837,000	62.2	\$3,732,000
<b>Custodial</b>	2.0	\$ 76,544	3.0	\$116,681	3.0	\$ 116,681	9.75	\$ 384,250	17.75	\$ 694,156
<b>Clerical</b>	.855	\$ 26,218	1.0	\$ 30,665	1.496	\$ 43,948	1.0	\$ 30,665	4.351	\$ 131,496
<b>Utilities</b>		\$ 97,066		\$ 85,178		\$ 89,527		\$ 529,917		\$ 801,688
<b>Rent</b>		\$119,802								\$ 119,802
		\$925,630		\$892,524		\$1,879,156		\$1,781,832		\$5,479,142

**PROPOSED**

	MNS		PES		TOTAL		SAVINGS
	FTE	COST	FTE	COST	FTE	COST	
<b>Educational</b>	36.90	\$2,214,000	18.80	\$1,128,000	55.70	\$3,342,000	\$390,000
<b>Custodial</b>	9.75	\$ 384,250	3.0	\$ 116,681	12.75	\$ 500,931	\$193,225
<b>Clerical</b>	1.496	\$ 43,948	1.496	\$ 43,948	2.992	\$ 87,896	\$ 43,600
<b>Utilities</b>		\$ 529,917		\$ 89,527		\$ 619,444	\$182,244
<b>Rent</b>		-		-		-	\$119,802
		\$3,172,115		\$1,378,156		\$4,550,271	\$928,871

**Staff in Affected Schools**

All rights will be guaranteed under the respective collective agreements.

**Pupil Transportation**

Bussing arrangements will be made for all students who live more than 1.5 kms. from their new school, if the reorganization takes place.

### **Benefits of Reorganization**

- More classes at each grade level allowing for better opportunity for team approach to teaching, sharing ideas and materials, and increased access to resources.
- Consolidation of services and equipment – one facility, one staff, combined resources, etc.
- Financial considerations
- Increased opportunity for co and extra curricular activities
- More play space
- Playground equipment

### **Opportunities to Present to the District Education Council**

Please note that presentations should be no more than thirty (30) minutes in length, and at least one hard copy of the presentation must be provided at the meeting attended. All Council meetings take place in the Upper Conference Room, School District 8 Office, 490 Woodward Avenue, Saint John.

a. District Education Council Monthly Meeting, October 8 (7:00 p.m.):

The Parent School Support Committee (PSSC) of Hazen White St. Francis School will be invited to make a presentation to Council, if they wish to do so.

b. Special District Education Council Meeting, October 15 (7:00 p.m.):

The Parent School Support Committees (PSSCs) of Princess Elizabeth School and Millidgeville North School each will be invited to make presentations to Council, if they wish to do so. There will also be an opportunity for other groups to present to Council that evening.

c. District Education Council Monthly Meeting, November 12 (7:00 p.m.):

The Parent School Support Committee (PSSC) of Lorne School will be invited to make a presentation to Council, if they wish to do so.

d. Special District Education Council Meeting, November 19 (7:00 p.m.):

All other groups that wish to present to Council will be given the opportunity to do so by calling the Superintendent's Office at 658-5325 on or before October 1, to request agenda time for the evening of November 19.

To summarize, affected schools may present on October 8, 15, and November 12. Other groups may present on October 15 and November 19 by appointment.

e. Written Submissions:

Additionally, written submissions will be received up to 4:30 p.m. on November 25 at the following address: Superintendent, School District 8, 490 Woodward Avenue, Saint John, NB E2K 5N3

f. Electronic Submissions:

People may e-mail their feedback to: [district8schoolreorganization@nbed.nb.ca](mailto:district8schoolreorganization@nbed.nb.ca)

Although an automatic *acknowledgement* will be sent, people should not expect to receive a formal response. Please be assured that feedback submitted electronically will be reviewed and given the same weight as feedback received in other venues throughout the consultation process.

*District Education Council Decision*

Council will make a decision with respect to their recommendation to the Education Minister at their regular monthly meeting on January 14, 2009.